



INSTALLATION INSTRUCTIONS

Accessory

TRUNK TRAY
P/N 08U45-TY2-200

Application

2015 RLX

Publications No.

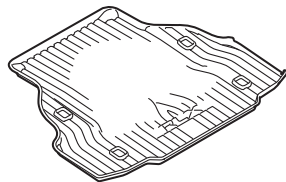
BII 51839

Issue Date

JULY 2014

PART LIST

Trunk tray

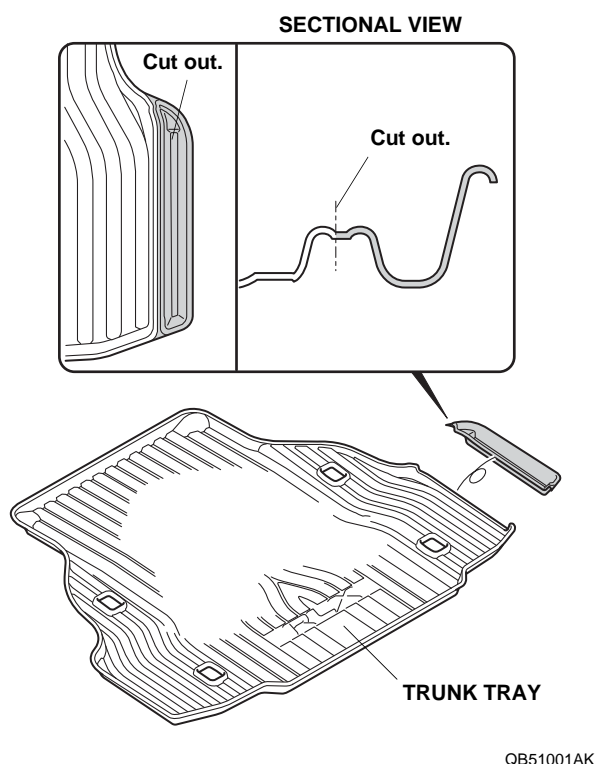


TOOLS AND SUPPLIES REQUIRED

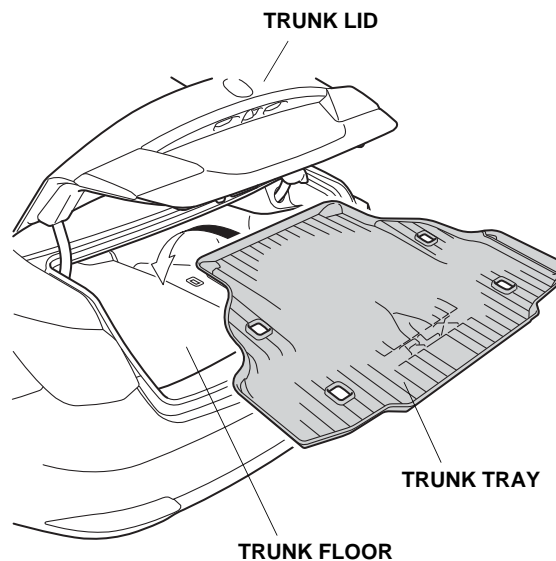
Utility knife

INSTALLATION

1. **For Premium Audio (KRELL) Equipped Models:**
Use a utility knife to cut out the trunk tray in the area shown.



2. Open the trunk lid. Place the trunk tray on the trunk floor.



QB51002AK